

# QUALITY FEATURES

## DISTINCTIVE EXTERIORS

- Seven architecturally unique and distinguishable model homes
- State of the art, energy efficient dual pane, all-vinyl windows
- Warm, welcoming, and inviting front porches (per plan)
- Malarkey® roof composition shingles
- Fully-curved fascia rain gutters with down spouts
- Lighted automated house numbers
- Advanced sectional automatic roll up garage doors complete with designer windows, exterior keypad entry and remote controls
- Distinctive variety of frontyard landscape designs
- Programmable and automatic frontyard landscape irrigation system
- Concrete patio in backyard
- Aesthetically pleasing fenced yard with front access gate
- Conveniently placed hose bibs in front and backyards

## SPICY GOURMET KITCHENS

- Gorgeous recessed Beech wood panel cabinetry with satin nickel pulls, Euro hidden spring hinges and soft closure glides on drawers
- Tasteful and elegant Quartz countertops with designer tile 6 inch back splash
- Top of the line KitchenAid® stainless steel appliances including 5 burner gas slide-in convection range with microwave hood
- Quality KitchenAid® Dishwasher with ProWash™
- Energy efficient LED recessed can lighting
- Elegant satin nickel pull-out kitchen faucet and stainless steel sink
- Spacious and gorgeous kitchen islands (per plan)
- Sturdy, hassle-free tile flooring
- Built in water line for icemaker
- USB port for convenience

## INTERIORS WITH PIZAZZ

- Plush and cozy wall-to-wall carpeting
- Exquisite craftsmanship and pride of work throughout, including: solid Beech wood handrails, traditional staircases lined with skirt boards, turned newel posts and detail-shaped banisters (per plan)
- Intricately raised panel doors
- Practical and stylish surface-mounted lighting fixtures in all bedrooms
- Kohler® bathroom vanity fixtures with delicate chrome finish
- Lever door handles with satin nickel finish
- Interior laundry room with natural gas and 220v
- Classy tile entry
- Stylish and neutral two-toned interior paint
- Structure network wiring throughout home

## INVITING MASTER SUITES

- Stylish designer light fixtures with room vacancy sensors in all bathrooms
- Top of the line designer Kohler® vanity faucets
- Spacious walk in closets (per plan)
- Water-efficient toilets in all bathrooms
- Matching dual china basins with Piedrafina countertops with 4 inch designer selected tile back splash
- Oversized mirrors and medicine cabinets
- Designer selected tile flooring
- Humidity sensor fans in all bathrooms

## FOR YOUR COMFORT AND SAFETY

- Weather stripping on all exterior doors
- Top of the line insulation in all exterior walls and ceilings
- Dual zone central forced-air gas heating and air conditioning system
- Accelerated hot water delivery system
- Smoke and carbon monoxide detectors
- Automatic fire suppression system
- Whole house ventilation system



In an effort to continuously improve its product, Stone Bridge Homes reserves the right to change maps, floor plans, house sizes, exteriors, specifications, prices and availability without notice. Some items in and around the model home may not be included in the purchase price. All optional choices and amenity requests are subject to availability, price changes, and construction cut-off dates. All renderings, floor plans, and maps are artists' conceptions and are not intended to be an actual depiction of the buildings, walks, driveways or landscaping, and are not necessarily to scale. All square footages are approximate. Walks, elevations, garages and windows will vary according to the size and location of lots.

## Walnut Park

### Address:

Union Road and just east of Cerra Vista Drive  
Hollister CA 95023

### Phone: (831) 638-4858

**Hours:** Open Thur-Mon - 10am-5pm,  
Closed Tuesday & Wednesday

**Visit:** Stone-Bridge-Homes.com

**E-mail:** Sales@Stone-Bridge-Homes.com

California BRE Public Report for Walnut Park # 150437SA - S01

Sales Broker is Thrust IV, Inc., **BRE#** 00407954

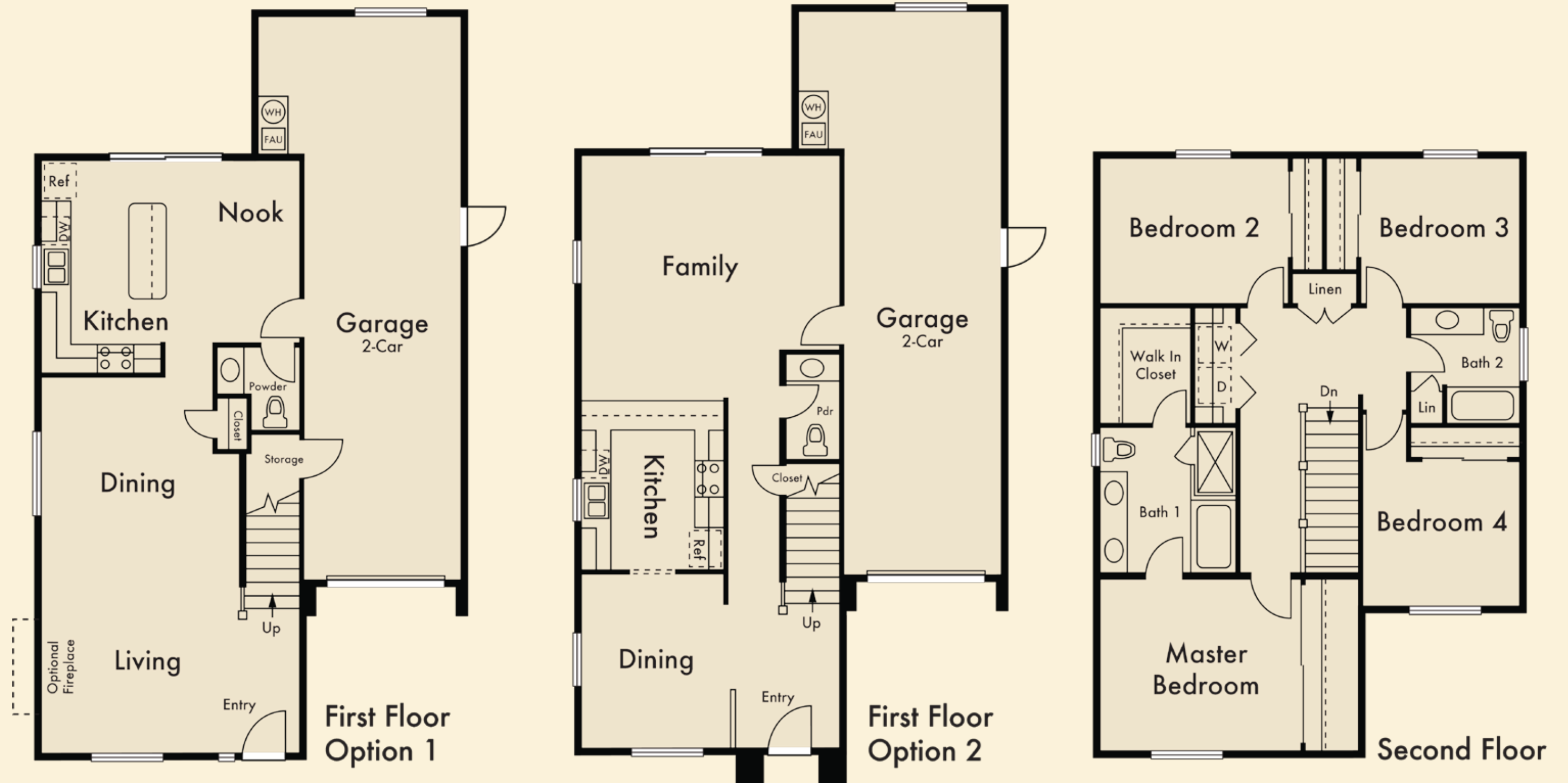
# WALNUT PARK



## RESIDENCE E

# RESIDENCE E

4 BEDROOM, 2-1/2 BATH | APPROX. 1,934 SQ.FT.



Plan E is a two-story home that presents quality appointments and plenty of spacious living. Two optional first floor plans offer unique living, dining, and kitchen combinations, perfect for those who want to choose between formal dining or relaxed living. Kitchens features stainless steel appliances, Quartz countertops with tile backsplashes and the choice of a gorgeous center island and nook or larger family room. Upstairs, the Master Retreat has a dual vanity sink and large walk-in closet and is separate from the other three bedrooms. Plan E is designed for families who want a lot of living under one roof.

Floorplan is artist's concept and not to scale. Square footage is approximate. All information is subject to change without notice.



# QUALITY FEATURES

## DISTINCTIVE EXTERIORS

- Seven architecturally unique and distinguishable model homes
- State of the art, energy efficient dual pane, all-vinyl windows
- Warm, welcoming, and inviting front porches (per plan)
- Malarkey® roof composition shingles
- Fully-curved fascia rain gutters with down spouts
- Lighted automated house numbers
- Advanced sectional automatic roll up garage doors complete with designer windows, exterior keypad entry and remote controls
- Distinctive variety of frontyard landscape designs
- Programmable and automatic frontyard landscape irrigation system
- Concrete patio in backyard
- Aesthetically pleasing fenced yard with front access gate
- Conveniently placed hose bibs in front and backyards

## SPICY GOURMET KITCHENS

- Gorgeous recessed Beech wood panel cabinetry with satin nickel pulls, Euro hidden spring hinges and soft closure glides on drawers
- Tasteful and elegant Quartz countertops with designer tile 6 inch back splash
- Top of the line KitchenAid® stainless steel appliances including 5 burner gas slide-in convection range with microwave hood
- Quality KitchenAid® Dishwasher with ProWash™
- Energy efficient LED recessed can lighting
- Elegant satin nickel pull-out kitchen faucet and stainless steel sink
- Spacious and gorgeous kitchen islands (per plan)
- Sturdy, hassle-free tile flooring
- Built in water line for icemaker
- USB port for convenience

## INTERIORS WITH PIZAZZ

- Plush and cozy wall-to-wall carpeting
- Exquisite craftsmanship and pride of work throughout, including: solid Beech wood handrails, traditional staircases lined with skirt boards, turned newel posts and detail-shaped banisters (per plan)
- Intricately raised panel doors
- Practical and stylish surface-mounted lighting fixtures in all bedrooms
- Kohler® bathroom vanity fixtures with delicate chrome finish
- Lever door handles with satin nickel finish
- Interior laundry room with natural gas and 220v
- Classy tile entry
- Stylish and neutral two-toned interior paint
- Structure network wiring throughout home

## INVITING MASTER SUITES

- Stylish designer light fixtures with room vacancy sensors in all bathrooms
- Top of the line designer Kohler® vanity faucets
- Spacious walk in closets (per plan)
- Water-efficient toilets in all bathrooms
- Matching dual china basins with Piedrafina countertops with 4 inch designer selected tile back splash
- Oversized mirrors and medicine cabinets
- Designer selected tile flooring
- Humidity sensor fans in all bathrooms

## FOR YOUR COMFORT AND SAFETY

- Weather stripping on all exterior doors
- Top of the line insulation in all exterior walls and ceilings
- Dual zone central forced-air gas heating and air conditioning system
- Accelerated hot water delivery system
- Smoke and carbon monoxide detectors
- Automatic fire suppression system
- Whole house ventilation system



In an effort to continuously improve its product, Stone Bridge Homes reserves the right to change maps, floor plans, house sizes, exteriors, specifications, prices and availability without notice. Some items in and around the model home may not be included in the purchase price. All optional choices and amenity requests are subject to availability, price changes, and construction cut-off dates. All renderings, floor plans, and maps are artists' conceptions and are not intended to be an actual depiction of the buildings, walks, driveways or landscaping, and are not necessarily to scale. All square footages are approximate. Walks, elevations, garages and windows will vary according to the size and location of lots.

## Walnut Park

### Address:

Union Road and just east of Cerra Vista Drive  
Hollister CA 95023

### Phone: (831) 638-4858

**Hours:** Open Thur-Mon - 10am-5pm,  
Closed Tuesday & Wednesday

**Visit:** Stone-Bridge-Homes.com

**E-mail:** Sales@Stone-Bridge-Homes.com

California BRE Public Report for Walnut Park # 150437SA - S01

Sales Broker is Thrust IV, Inc., **BRE#** 00407954

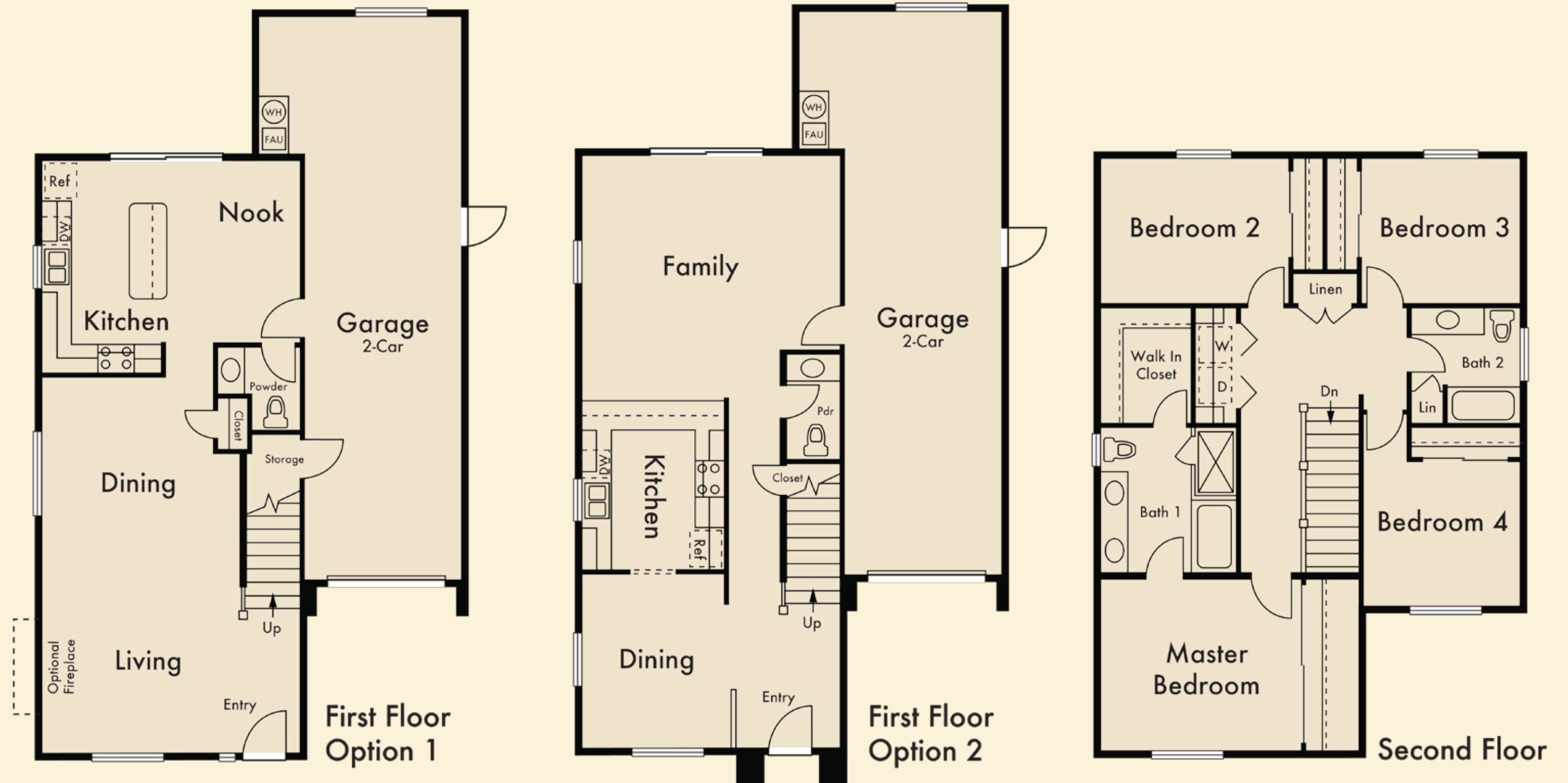
# WALNUT PARK



## RESIDENCE F

# RESIDENCE F

4 BEDROOM, 2-1/2 BATH | APPROX. 1,934 SQ.FT.



Plan F is a two-story home that presents quality appointments and plenty of spacious living. Two optional first floor plans offer unique living, dining, and kitchen combinations, perfect for those who want to choose between formal dining or relaxed living. Kitchens features stainless steel appliances, Quartz countertops with tile backsplashes and the choice of a gorgeous center island and nook or larger family room. Upstairs, the Master Retreat has a dual vanity sink and large walk-in closet and is separate from the other three bedrooms. Plan F is designed for families who want a lot of living under one roof.

Floorplan is artist's concept and not to scale. Square footage is approximate. All information is subject to change without notice.



# QUALITY FEATURES

## DISTINCTIVE EXTERIORS

- Seven architecturally unique and distinguishable model homes
- State of the art, energy efficient dual pane, all-vinyl windows
- Warm, welcoming, and inviting front porches (per plan)
- Malarkey® roof composition shingles
- Fully-curved fascia rain gutters with down spouts
- Lighted automated house numbers
- Advanced sectional automatic roll up garage doors complete with designer windows, exterior keypad entry and remote controls
- Distinctive variety of frontyard landscape designs
- Programmable and automatic frontyard landscape irrigation system
- Concrete patio in backyard
- Aesthetically pleasing fenced yard with front access gate
- Conveniently placed hose bibs in front and backyards

## SPICY GOURMET KITCHENS

- Gorgeous recessed Beech wood panel cabinetry with satin nickel pulls, Euro hidden spring hinges and soft closure glides on drawers
- Tasteful and elegant Quartz countertops with designer tile 6 inch back splash
- Top of the line KitchenAid® stainless steel appliances including 5 burner gas slide-in convection range with microwave hood
- Quality KitchenAid® Dishwasher with ProWash™
- Energy efficient LED recessed can lighting
- Elegant satin nickel pull-out kitchen faucet and stainless steel sink
- Spacious and gorgeous kitchen islands (per plan)
- Sturdy, hassle-free tile flooring
- Built in water line for icemaker
- USB port for convenience

## INTERIORS WITH PIZAZZ

- Plush and cozy wall-to-wall carpeting
- Exquisite craftsmanship and pride of work throughout, including: solid Beech wood handrails, traditional staircases lined with skirt boards, turned newel posts and detail-shaped banisters (per plan)
- Intricately raised panel doors
- Practical and stylish surface-mounted lighting fixtures in all bedrooms
- Kohler® bathroom vanity fixtures with delicate chrome finish
- Lever door handles with satin nickel finish
- Interior laundry room with natural gas and 220v
- Classy tile entry
- Stylish and neutral two-toned interior paint
- Structure network wiring throughout home

## INVITING MASTER SUITES

- Stylish designer light fixtures with room vacancy sensors in all bathrooms
- Top of the line designer Kohler® vanity faucets
- Spacious walk in closets (per plan)
- Water-efficient toilets in all bathrooms
- Matching dual china basins with Piedrafina countertops with 4 inch designer selected tile back splash
- Oversized mirrors and medicine cabinets
- Designer selected tile flooring
- Humidity sensor fans in all bathrooms

## FOR YOUR COMFORT AND SAFETY

- Weather stripping on all exterior doors
- Top of the line insulation in all exterior walls and ceilings
- Dual zone central forced-air gas heating and air conditioning system
- Accelerated hot water delivery system
- Smoke and carbon monoxide detectors
- Automatic fire suppression system
- Whole house ventilation system



In an effort to continuously improve its product, Stone Bridge Homes reserves the right to change maps, floor plans, house sizes, exteriors, specifications, prices and availability without notice. Some items in and around the model home may not be included in the purchase price. All optional choices and amenity requests are subject to availability, price changes, and construction cut-off dates. All renderings, floor plans, and maps are artists' conceptions and are not intended to be an actual depiction of the buildings, walks, driveways or landscaping, and are not necessarily to scale. All square footages are approximate. Walks, elevations, garages and windows will vary according to the size and location of lots.

## Walnut Park

### Address:

Union Road and just east of Cerra Vista Drive  
Hollister CA 95023

### Phone: (831) 638-4858

**Hours:** Open Thur-Mon - 10am-5pm,  
Closed Tuesday & Wednesday

**Visit:** Stone-Bridge-Homes.com

**E-mail:** Sales@Stone-Bridge-Homes.com

California BRE Public Report for Walnut Park # 150437SA - S01

Sales Broker is Thrust IV, Inc., **BRE#** 00407954

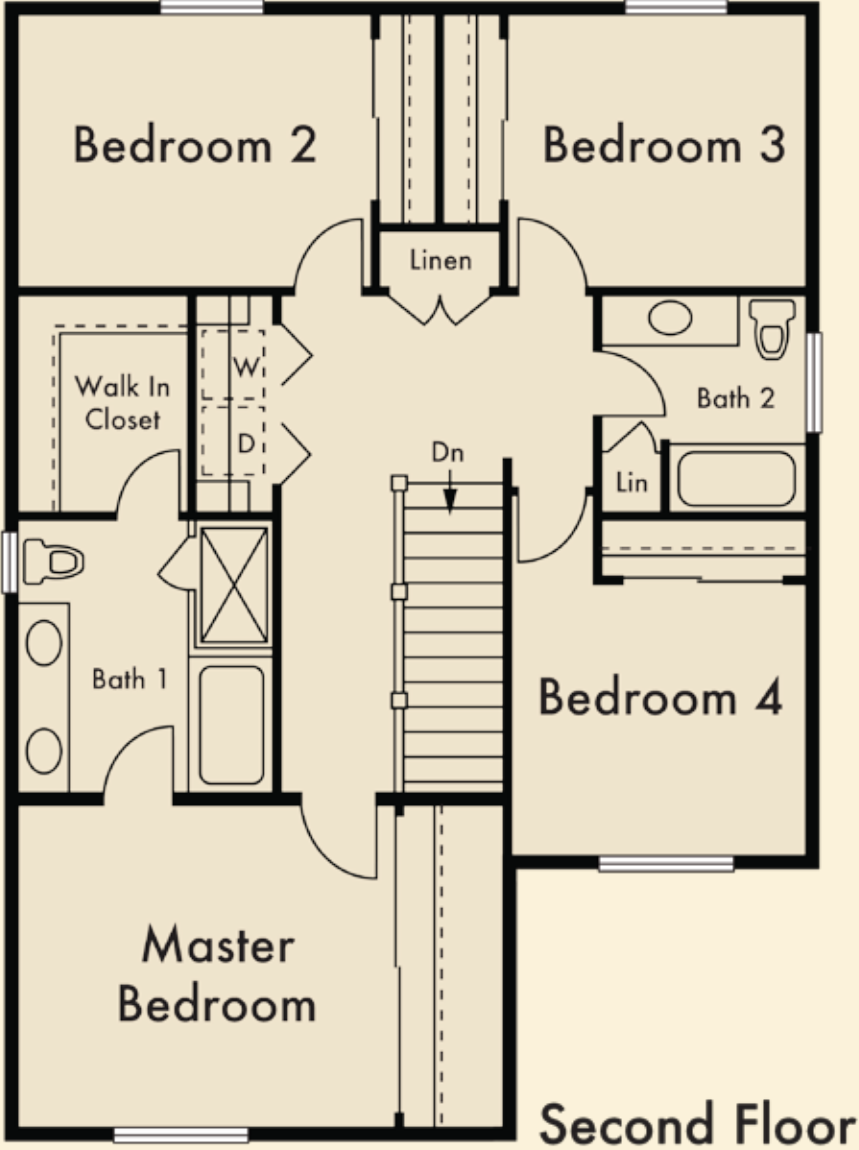
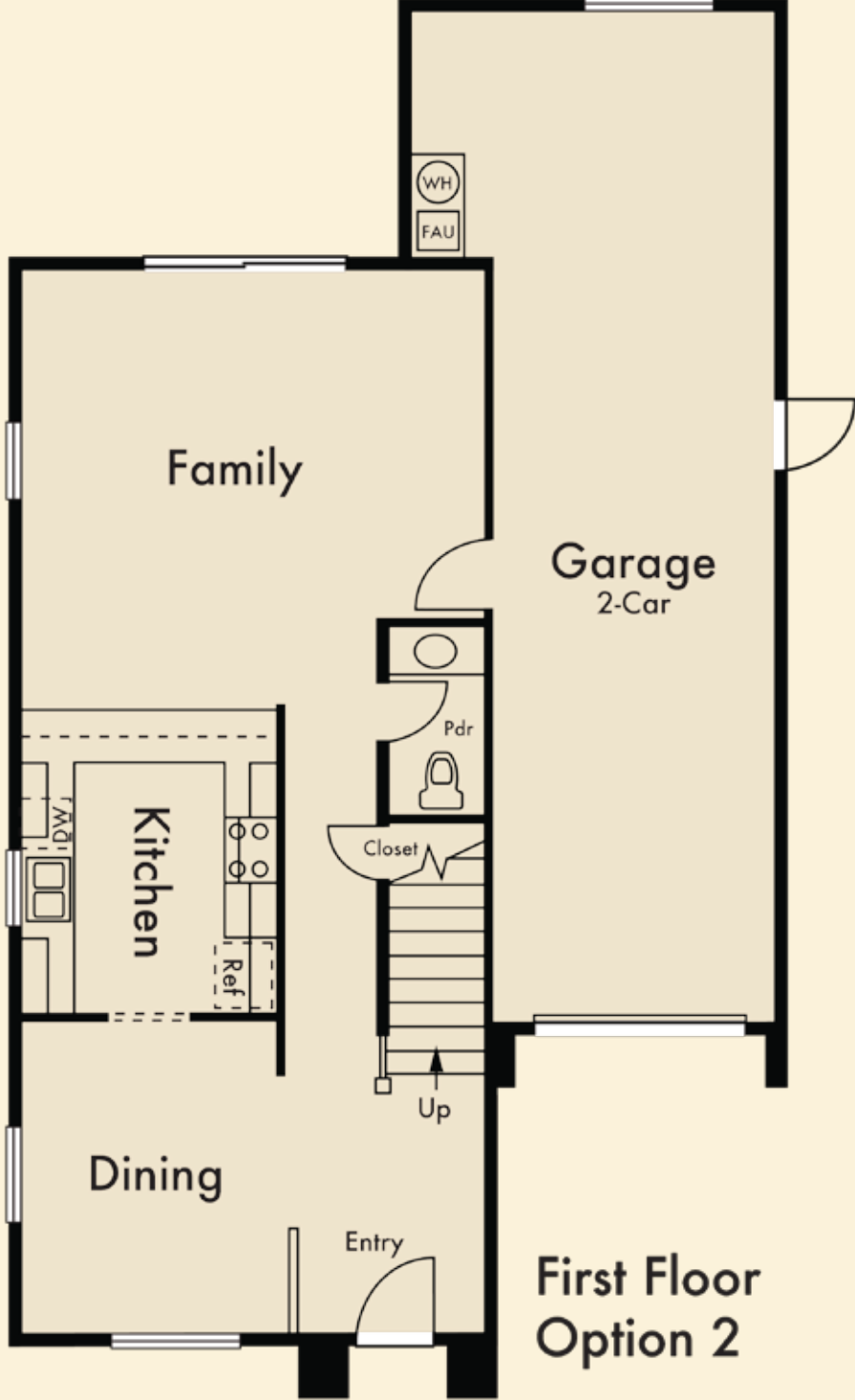
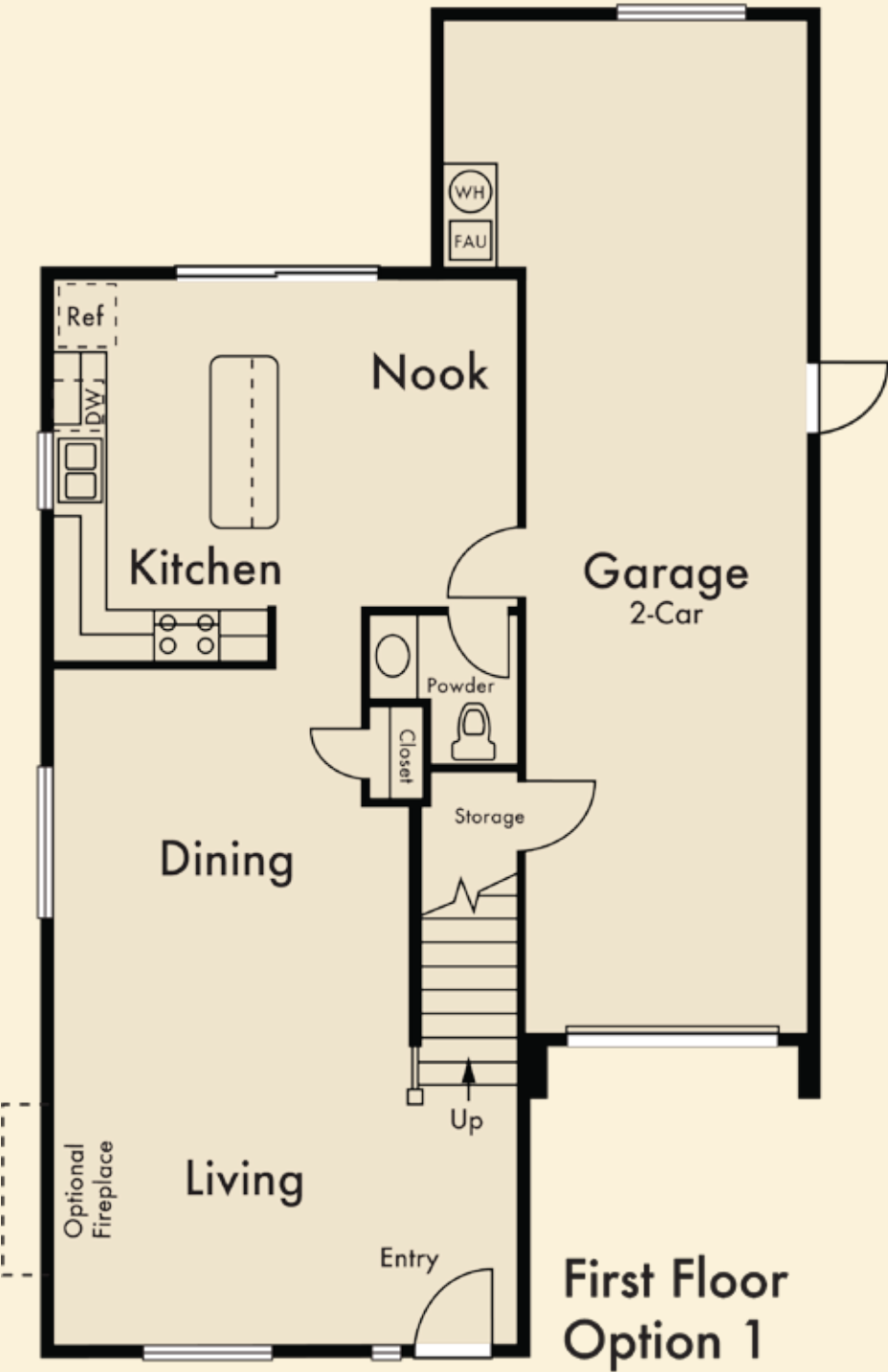
# WALNUT PARK



## RESIDENCE G

# RESIDENCE G

4 BEDROOM, 2-1/2 BATH | APPROX. 1,934 SQ.FT.



Plan G is a two-story home that presents quality appointments and plenty of spacious living. Two optional first floor plans offer unique living, dining, and kitchen combinations, perfect for those who want to choose between formal dining or relaxed living. Kitchens features stainless steel appliances, Quartz countertops with tile backsplashes and the choice of a gorgeous center island and nook or larger family room. Upstairs, the Master Retreat has a dual vanity sink and large walk-in closet and is separate from the other three bedrooms. Plan G is designed for families who want a lot of living under one roof.

Floorplan is artist's concept and not to scale. Square footage is approximate. All information is subject to change without notice.