

# QUALITY FEATURES

## DISTINCTIVE EXTERIORS

- Five architecturally unique and distinguishable model homes
- State of the art, energy efficient dual pane, all-vinyl windows
- Warm, welcoming, and inviting front porches (per plan)
- Eagle® lightweight concrete roof tile
- Full ogee fascia rain gutters with down spouts
- Lighted automated house numbers
- Advanced sectional automatic roll up garage doors complete with designer windows, exterior keypad entry and remote controls
- Distinctive variety of frontyard landscape designs
- Programmable and automatic frontyard landscape irrigation system
- Aesthetically pleasing fenced yard with front access gate
- Conveniently placed hose bibs in front and backyards

## SPICY GOURMET KITCHENS

- Spacious floorplans with light-filled open interiors
- Gorgeous recessed Beech wood panel cabinetry with satin nickel pulls, Euro hidden spring hinges and soft closure glides on drawers, offered in three distinctive stain colors
- Tasteful and elegant Quartz countertops with designer tile 6 inch back splash
- Top of the line KitchenAid® stainless steel appliances including 36 inch 5 burner gas cooktop with hood
- KitchenAid® combination wall oven/microwave
- Quality KitchenAid® Dishwasher
- Energy efficient LED recessed can lighting
- Elegant satin nickel pull-out kitchen faucet and stainless steel sink
- Spacious and gorgeous kitchen islands
- Sturdy, hassle-free tile flooring
- Built in water line for icemaker
- USB port for convenience

## INTERIORS WITH PIZAZZ

- Gas appliance fireplace (per plan)
- Plush and cozy wall-to-wall carpeting
- Exquisite craftsmanship and pride of work throughout, including: solid Beech wood handrails, traditional staircases lined with skirt boards, turned newel posts and detail-shaped banisters (per plan)
- Intricately raised panel doors
- Practical and stylish surface-mounted lighting fixtures in all bedrooms
- Kohler® bathroom vanity fixtures with delicate chrome finish
- Lever door handles with satin nickel finish
- Interior laundry room with natural gas and 220 volt
- Classy tile entry
- Stylish and neutral two-toned interior paint
- Structure network wiring throughout home

## INVITING MASTER SUITES

- Stylish designer light fixtures with room vacancy sensors in all bathrooms
- Top of the line designer Kohler® vanity faucets
- Spacious walk in closets
- Water-efficient toilets in all bathrooms
- Matching dual china basins with Piedrafina countertops and 4 inch designer selected tile back splash (per plan)
- Oversized mirrors and medicine cabinets
- Designer selected tile flooring
- Humidity sensor fans in all bathrooms

## FOR YOUR COMFORT AND SAFETY

- Weather stripping on all exterior doors
- Top of the line insulation in all exterior walls and ceilings
- Central forced-air gas heating and air conditioning system to include dual zone on two story models
- Accelerated hot water delivery system
- Smoke and carbon monoxide detectors
- Automatic fire suppression system
- Whole house ventilation system



In an effort to continuously improve its product, Hillcrest Meadows, LLC reserves the right to change maps, floor plans, house sizes, exteriors, specifications, prices and availability without notice. Some items in and around the model home may not be included in the purchase price. All optional choices and amenity requests are subject to availability, price changes, and construction cut-off dates. All renderings, floor plans, and maps are artists' conceptions and are not intended to be an actual depiction of the buildings, walks, driveways or landscaping, and are not necessarily to scale. All square footages are approximate. Walks, elevations, garages and windows will vary according to the size and location of lots.

## Hillcrest Meadows

**Address:** 1293 Hillcrest Road, Hollister CA 95023

**Hours:** Open Thur-Mon - 10am-5pm, Closed Tuesday & Wednesday

**Phone:** (831) 638-4858

**Visit:** stone-bridge-homes.com

**CSLB#** 980798

**CalBre #**00407954

 **Stone Bridge HOMES**

# HILLCREST MEADOWS

## RESIDENCE FOUR



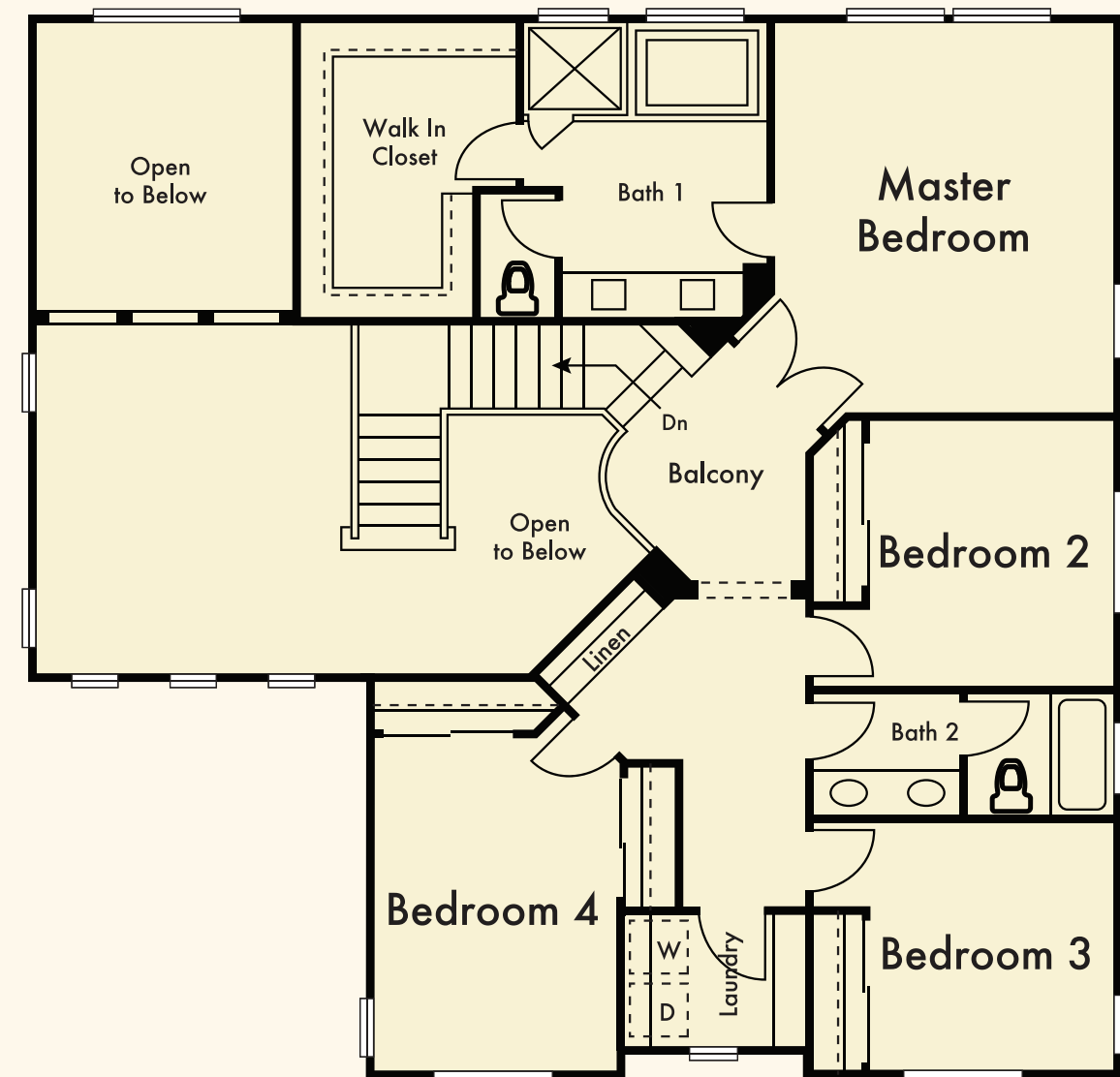
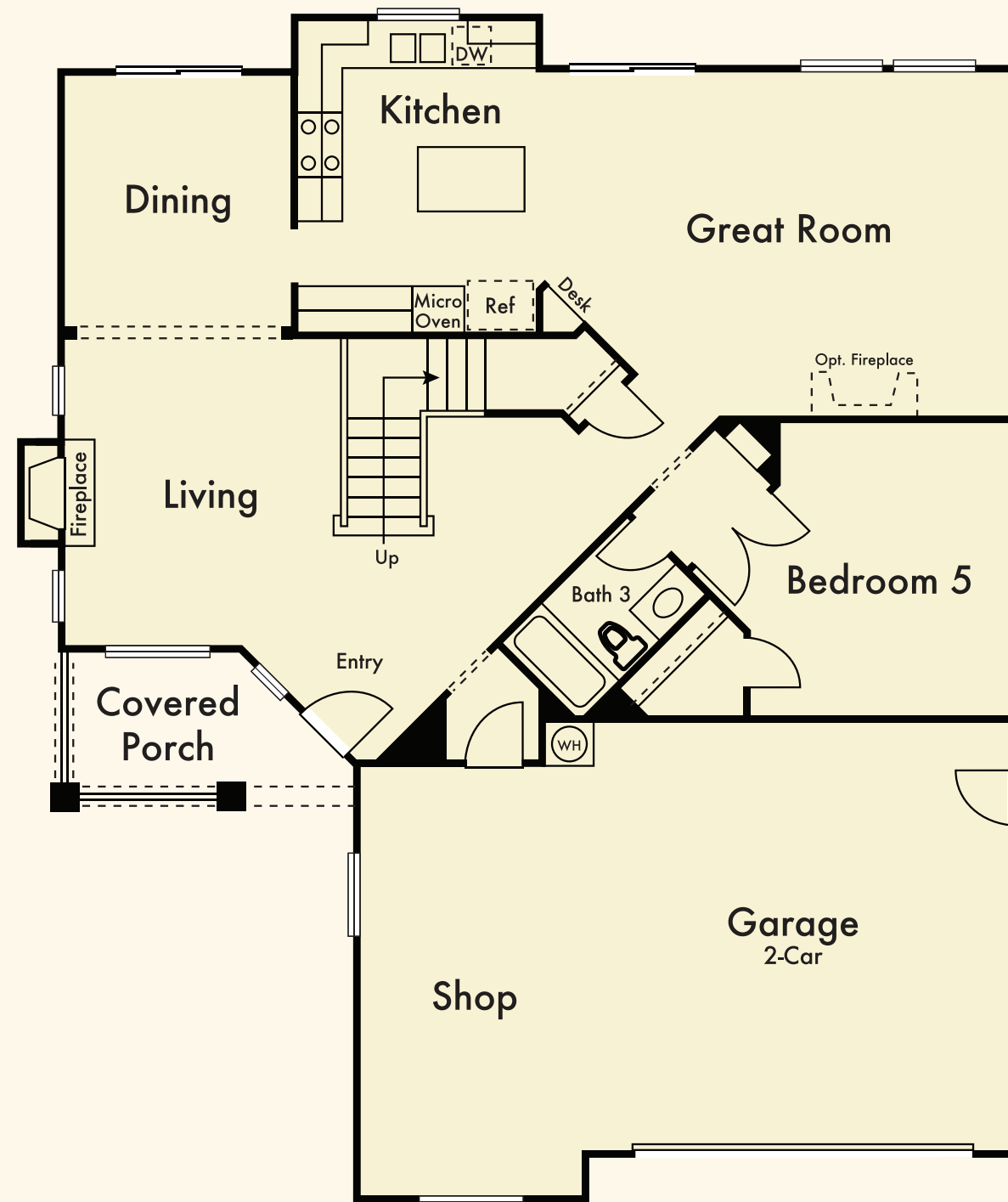
## ELEVATION B

5 BEDROOM, 3 BATH, 2-CAR GARAGE

APPROXIMATELY 2,632 SQ.FT.

# RESIDENCE FOUR

5 BEDROOM, 3 BATH,  
2-CAR GARAGE  
APPROXIMATELY 2,632 SQ. FT.



Residence Four presents an impressive and highly-livable two-story home design with a three-car garage that provides the bay as a Workshop. On the first floor, the Entry leads to an expansive Living Room with fireplace and formal Dining Room. An open-concept Kitchen with center island and breakfast nook offers Quartz countertops with tile back-splash and stainless steel appliances and expands to the Great Room with an optional cozy fireplace. Spacious and private, Bedroom Five serves as a secluded Guest Suite with full Bathroom. On the second story, three Bedrooms are conveniently located near a full Bathroom and Laundry Room. The Master Suite offers an over-sized Walk-in Closet, dual vanity sinks, luxurious soaking tub and separate shower with clear-glass surround.